

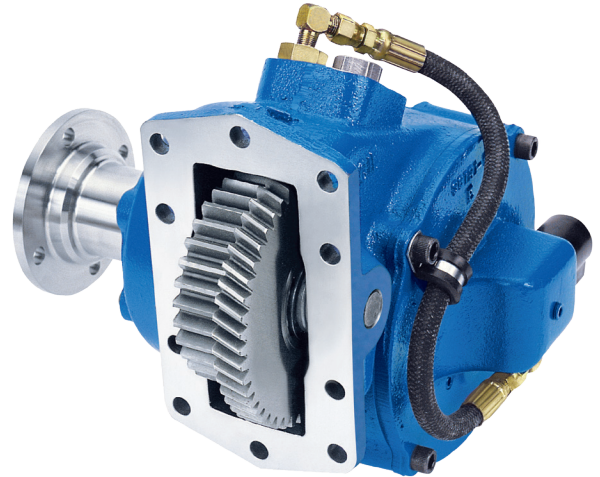
CS10/11 SERIES

CLUTCH SHIFT POWER TAKE-OFF



DESIGNED FOR HEAVY DUTY APPLICATIONS

Constructed with large gears, the CS10 Series power take-off is built for heavy duty applications. The CS10 features a drag brake and an output shaft designed around popular hydraulic pumps. For a more compact installation, the CS11 has a remotely mounted solenoid option.



KEY FEATURES

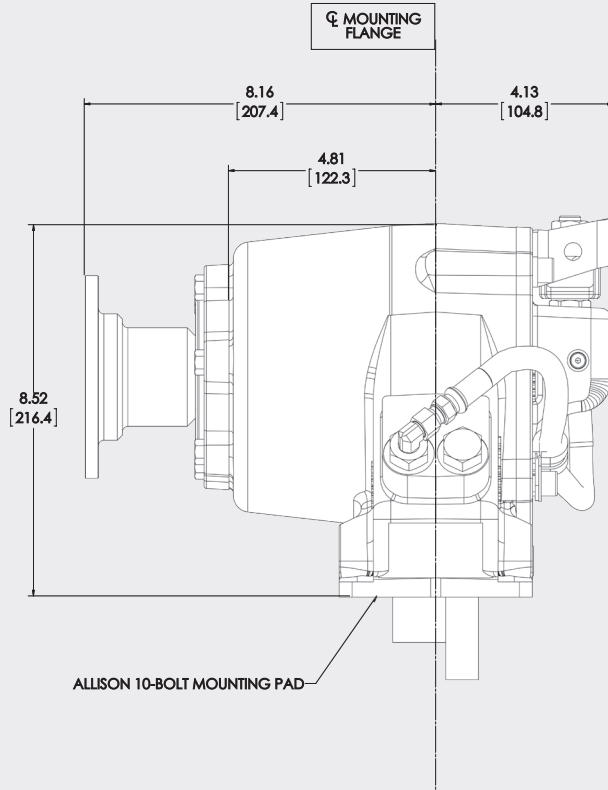
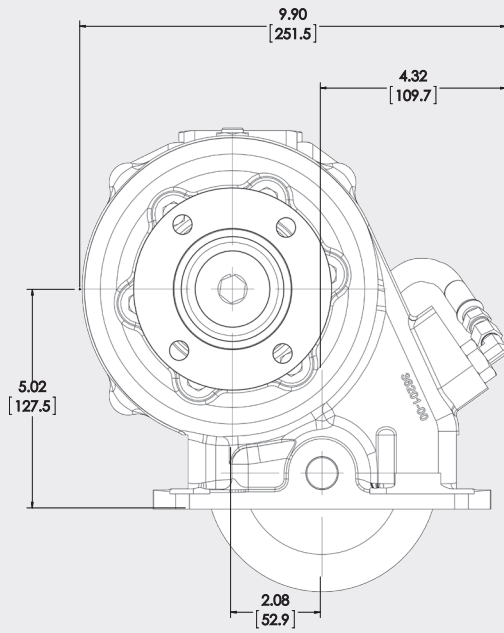
- Three remote mount output shafts in both keyed and flange types: Versatility for remote pump drives
- S.A.E. “B”, “BB”, and “C”; DIN 5462 direct mount pump options: Fits most popular pumps
- Rotatable direct mount flanges: Allows pump to be positioned for maximum clearance
- Standard pressure lubrication: No extra cost
- Muncie drag brake prevents shaft rotation in the “OFF” mode
- Two assembly arrangements: Allows the PTO to be mounted shaft high or low on either side of the transmission
- The CS** is now rated up to 4,000 RPM for fire pump applications

PTO TORQUE & HORSEPOWER RATINGS

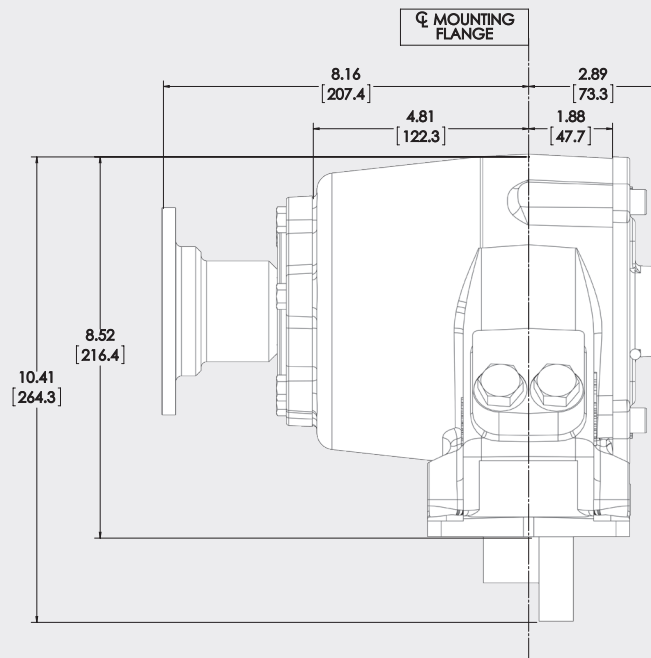
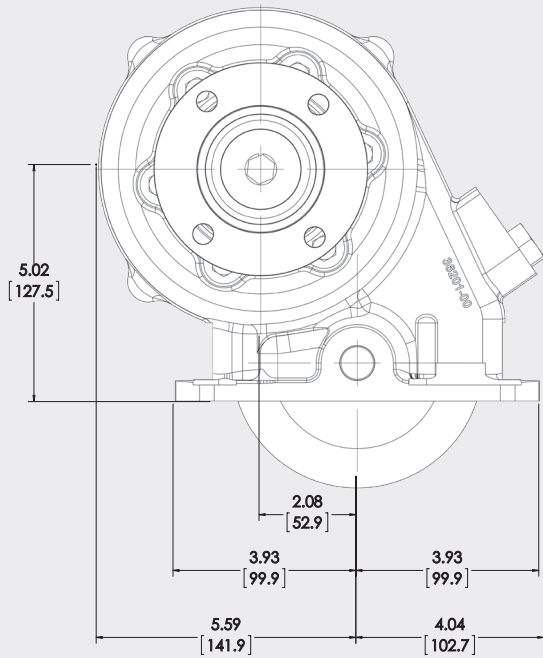
SPEED RATIO	INTERMITTENT HP @ 1,000 RPM	INTERMITTENT TORQUE LBS.FT.	CONTINUOUS TORQUE LBS.FT.	INTERMITTENT [KW] @ 1,000 RPM	INTERMITTENT TORQUE [NM]	CONTINUOUS TORQUE [NM]
05	95	500	350	[71]	[678]	[475]
06	91	480	336	[68]	[651]	[456]
07	86	450	315	[64]	[610]	[427]
08	80	420	294	[60]	[569]	[398]
10	73	385	270	[54]	[522]	[365]

Approximate Weight: 68 lbs. (30.9 Kg.)

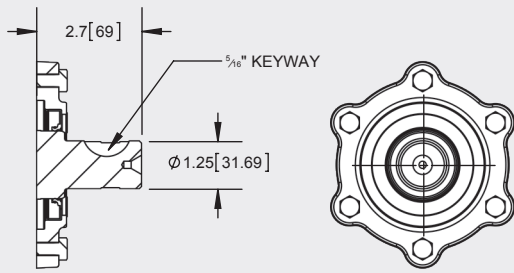
CS10 DIMENSIONS



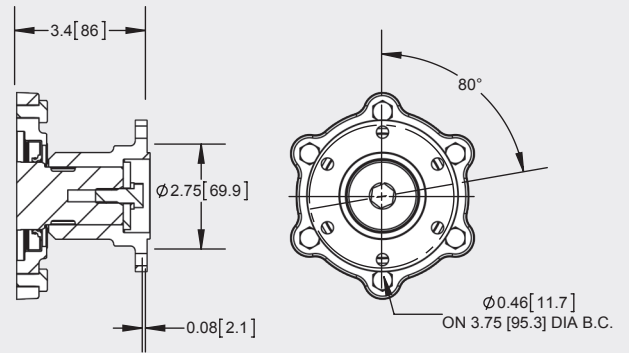
CS11 DIMENSIONS



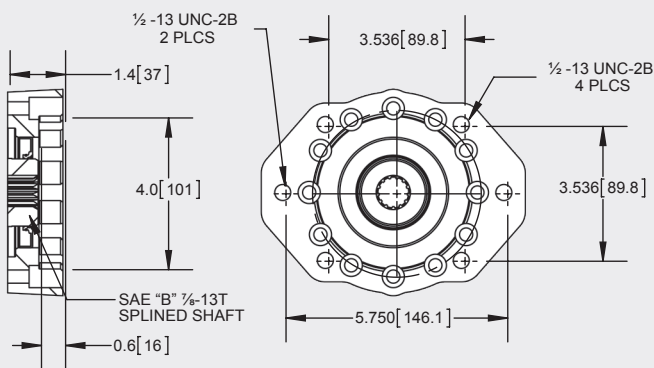
OUTPUT OPTIONS



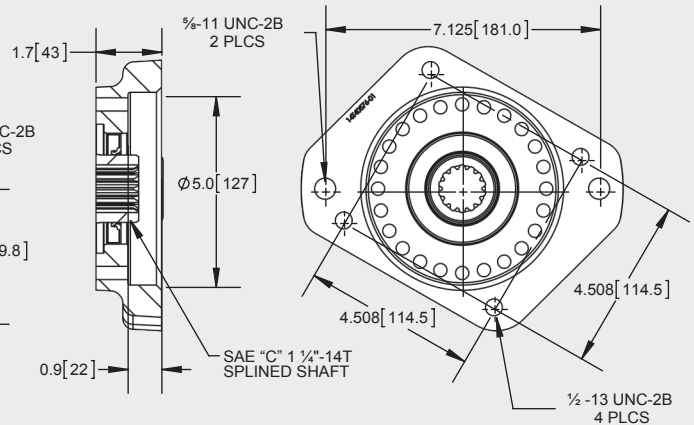
"B" OUTPUT - 1.25" RD SHAFT W/ 5/16" KEY



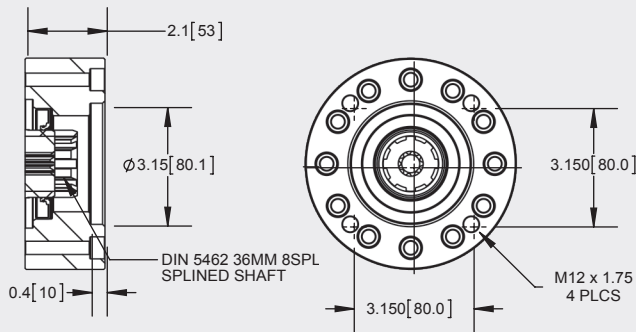
"C" OUTPUT - 1410 COMP FLANGE



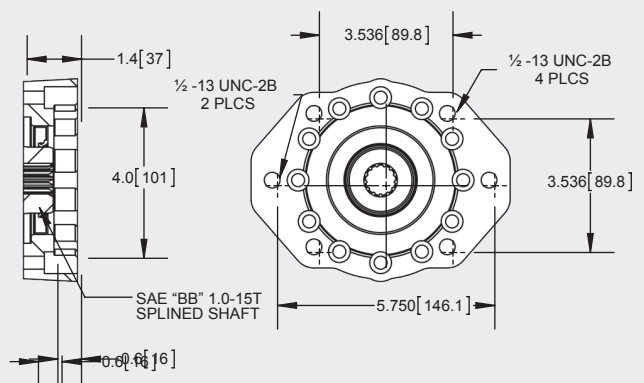
"D" OUTPUT - SAE "B" 2/4-BOLT



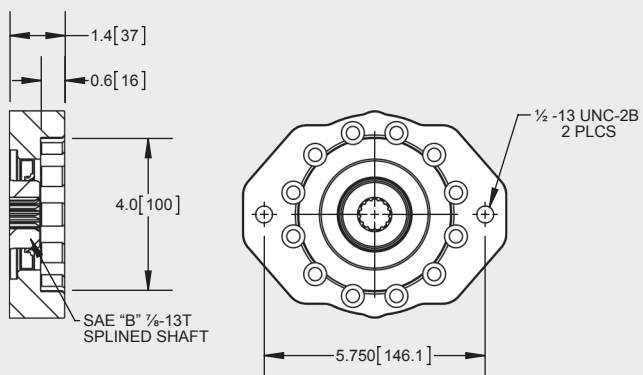
"E" OUTPUT - SAE "C" 2/4-BOLT



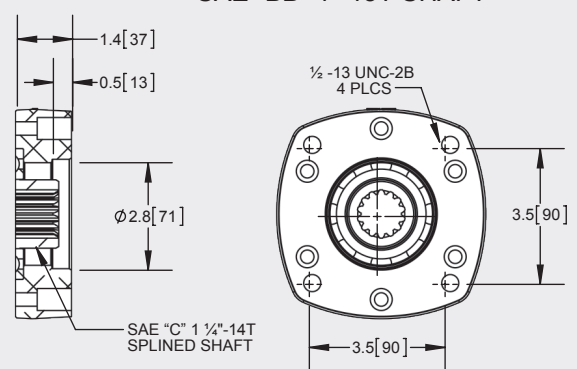
"I" OUTPUT - DIN 5462



"P" OUTPUT - SAE "B" 2/4-BOLT FLANGE
SAE "BB" 1"-15T SHAFT

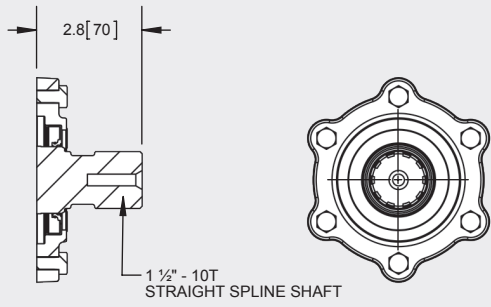


"S" OUTPUT - SAE "B" 2-BOLT

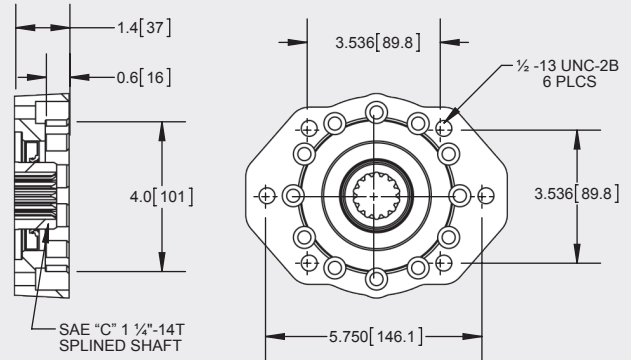


"V" OUTPUT - FOR MUNCIE EXTENDED SHAFT*
*Extended Shaft not included.

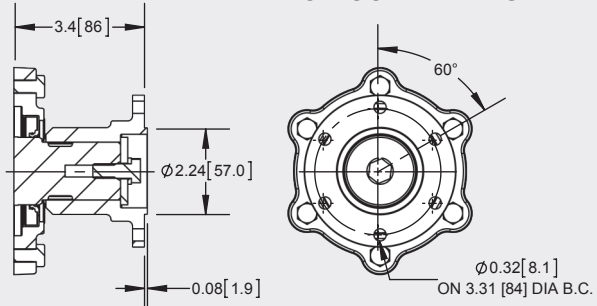
OUTPUT OPTIONS



“X” OUTPUT - 1 1/2"-10T SHAFT FOR COMP FLANGE



“Z” OUTPUT - SAE “B” 2/4-BOLT FLANGE SAE “C” 1 1/4"-14T SHAFT



“2” OUTPUT - DIN100 COMP FLANGE

MODEL NUMBER CONSTRUCTION

CS10-A1005 H1CX

PTO Type

Clutch Shift — CS

Mounting

10-Bolt Mount — 10
10-Bolt Mount Remote Solenoid — 11

Transmission

Allison

Gear Data

10.16P RH — A10

Speed Ratio

05 — .57:1
06 — .64:1
07 — .72:1
08 — .85:1
10 — .95:1

Shifter Type

Electric/Hydraulic (12 Volt) — H
Electric/Hydraulic (24 Volt) — J

Special Features

- X — None
- B — Hose Kit (HD Trans. R.S.)
- D — Pulse Generator & SPD1001D
- U — Pulse Generator
- 3 — Lube Hose Optional Length — 17"
- 4 — Lube Hose Delete
(Pressure Lube and Activation Hose included on all units)

Output Types

- B — 1/4" Rd. 5/16KW
- C — 1410 Companion Flange
- D — SAE “B” 2- & 4-Bolt
- E — SAE “C” 2- & 4-Bolt
- I — DIN 5462
- P — SAE “BB” 2- & 4-Bolt
- S — SAE “B” 2-Bolt
- V — For Muncie Extended Shaft*
*Extended Shaft not included
- Y — SAE “C” 2-Bolt
- Z — SAE “C” Shaft, SAE “B” Flange
- 2 — DIN Companion Flange

Assembly Arrangement

- 1
- 3